

CA-DP40 Firmware Update Software Instruction Manual



KONICA MINOLTA

CA-DP40 Firmware Update Software Instruction Manual

Note: This manual abbreviates product names as follows

Name used in this manual	Official name
Windows 10	Microsoft® Windows® 10 Pro Operating System

Trademark Notices

- Microsoft and Windows are registered trademarks of Microsoft Corporation in the US and in other countries.
- Other company names and product names that appear within this manual are trademarks or registered trademarks of their respective companies.

Notes on this Manual

- Copy or reproduction of all or any part of the contents of this manual without Konica Minolta's permission is strictly prohibited.
- The contents of this manual are subjects to change without prior notice.
- Konica Minolta will not accept any responsibility for consequences arising from the use of the software.

CA-DP40 Firmware Update Software
Instruction Manual

Table of Contents

Introduction	1
System Requirements.....	1
Updating the firmware	2
Before performing the firmware update	2
Update procedure.....	2
If the update process fails	4

Introduction

The CA-DP40 firmware update software is a tool for updating the firmware of the Data Processor CA-DP40, which is a part of the Konica Minolta Display Color Analyzer CA-410 system.

Please read this manual thoroughly and follow the stated procedure.

System Requirements

The CA-DP40 firmware update software requires the following environment.

- OS:
Windows 10(x86) / Windows 10(x64)
- The computer must be equipped with a USB 2.0-compliant USB port
- Instruments for which firmware can be updated:
Konica Minolta Data Processor CA-DP40

[Important]

This update software cannot be used to update the CA-410 probe firmware.

Updating the firmware

Perform the firmware update according to the procedure below.

Before performing the firmware update

IMPORTANT

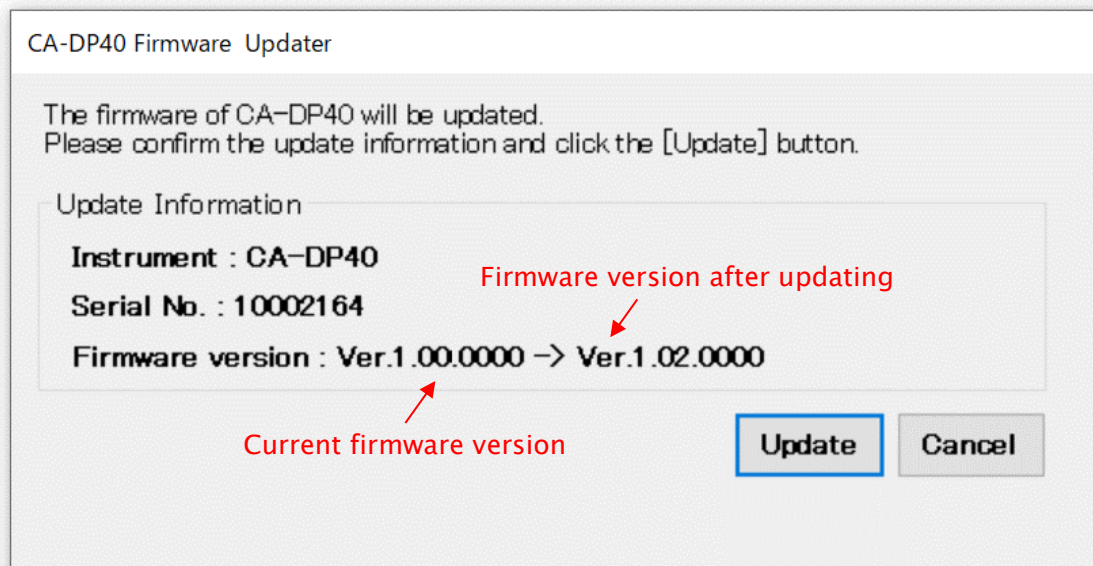
- Firmware update can be performed only on one instrument at a time via USB.
- If the computer is being powered by batteries, be sure that there is sufficient battery life left before proceeding.
- Make sure that the computer does not enter power-save mode during the firmware update. Updating the firmware usually takes about 3 minutes.
- During the firmware update, do not disconnect the USB cable connecting the instrument and computer.
- During the firmware update, do not use any other application that may try to access the instrument.

Update procedure

1. Connect the instrument for which the firmware will be updated to the PC via USB.

2. Start the firmware update software.

The firmware version is displayed. If the firmware version to be updated is correct, perform the next step. (Version numbers below are only examples; actual version numbers may be different.)



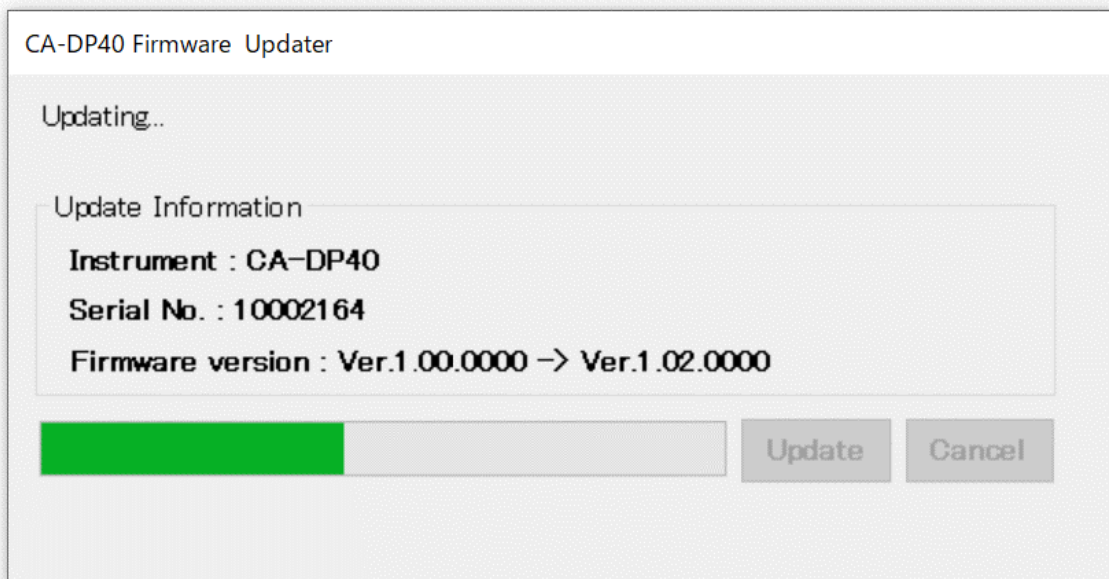
CA-DP40 Firmware Update Software
Instruction Manual

- Click the [Update] button to perform the firmware update.

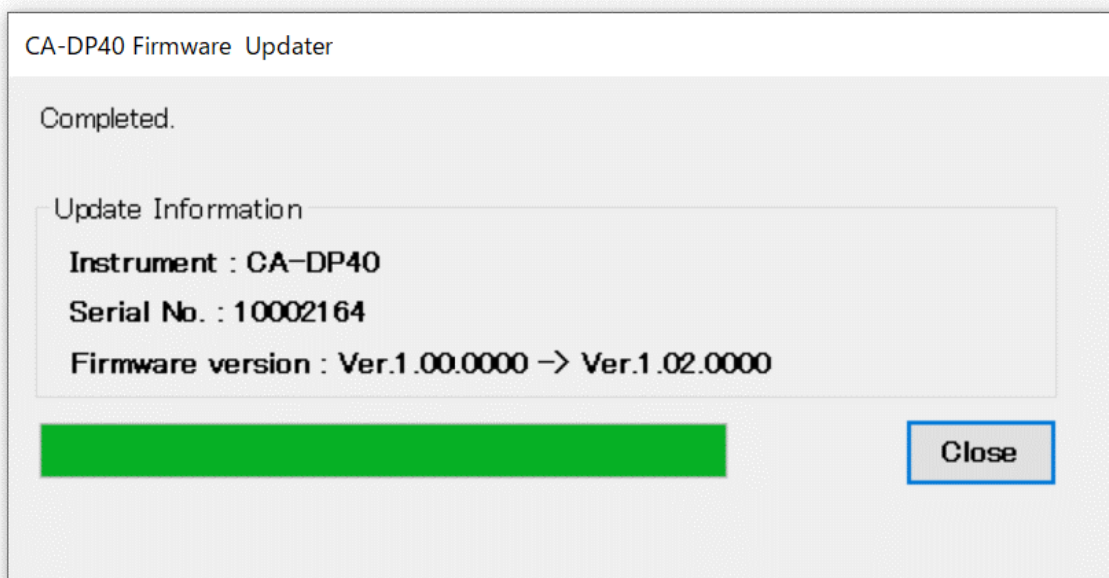
[Attention]

Once the firmware update has started, do not disconnect the instrument's USB cable or turn the instrument's power off.

- The firmware update will start. The dialog below will be displayed until the firmware update is completed. Wait until the update process has been completed. The firmware update is usually completed in about 3 minutes.



- When the firmware update has been completed, the dialog below will appear. Click the [Close] button to exit the update software.



This completes the firmware update process.

If the update process fails

If the firmware update process fails, the firmware update software will exit after showing an error message instead of the dialog in step 5.

If this occurs, switch the instrument's power off for a few seconds and then switch it back on, start the firmware update software again and try to perform the firmware update process again according to "[Update procedure](#)".